

# Environmental Perspectives

## Project Experience – Brighton New England Quarter

**Local Planning Authority:** Brighton & Hove City Council

**Location:** Brighton, Sussex

**Size:** Approximately 0.39ha.

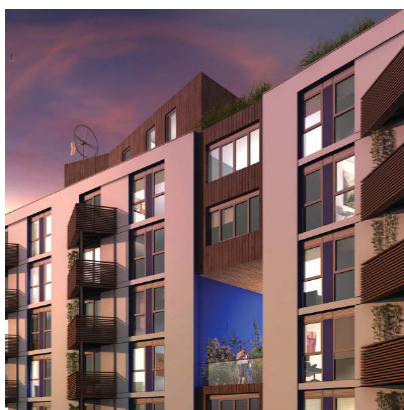
**Description:** Forming part of the Brighton New England Quarter Masterplan site and located adjacent to Brighton Station, Blocks E & F is a flagship mixed-use sustainable development comprising 172 residential units, office space and a community centre together with private and public open spaces and landscaping. The scheme embraces the One Planet Living framework and is an exemplar demonstration of sustainable development.

### Project Summary

Environmental Perspectives and Planning Perspectives project-managed the Environmental Impact Assessment and Planning Application submission for this highly sustainable urban development.

Sustainability is at the very core of the development proposals and has been designed to accord with the broad and comprehensive sustainability remit as embraced by the One Planet Living framework, a joint initiative between WWF and BioRegional Development Group. The scheme, therefore, goes beyond minimising the impacts of construction and optimising the performance of the built form, to include measures and features that will support and promote sustainable lifestyles of the users and occupiers of the scheme, creating a truly sustainable community. The development will be super energy efficient and carbon neutral, to be achieved by incorporating building-integrated wind turbines, photo-voltaics, a biomass boiler and establishing an Energy Services Company (ESCO) to source the remaining electricity requirements through a 'green tariff'. The scheme is also car-free, supported by a Green Travel Plan that includes a car club, cycle club and cycle storage facilities. The development includes integrated recycling facilities, rooftop mini-allotment plots, on-site composting facilities and a community centre to act as a focus for the development and as a facility for the wider community with a Green Lifestyles Caretaker and community extranet to facilitate residents to make sustainable lifestyle choices.

Services for this project included the project management of the Environmental Impact Assessment, of the planning application and co-ordination of accompanying technical component studies and production of the socio-economic analysis.



Key environmental issues were

- Sustainability;
- Townscape & visual;
- Access;
- Air Quality;
- Wind; and
- Ecology.

Utilising our understanding the environmental issues associated with urban developments we provided a focused cost-effective EIA process.